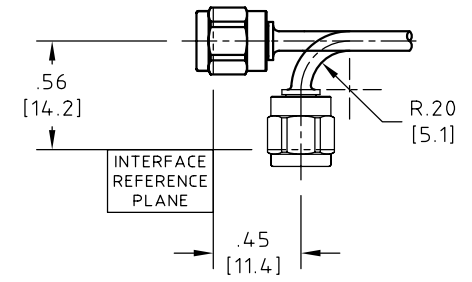


ASSEMBLY NO.	REF. NO.	DIM. "L"	2.0 GHz		26.5 GHz		50 GHz		65 GHz	
			VSWR	LOSS, dB	VSWR	LOSS, dB	VSWR	LOSS, dB	VSWR	LOSS, dB
minibend VG-2.5	32081E-2-29890CR-2.5	2.50 (63.5)	1.20:1	0.19	1.45:1	0.62	1.55:1	0.99	1.60:1	1.12
minibend VG-3	32081E-2-29890CR-3	3.00 (76.2)	1.20:1	0.20	1.45:1	0.68	1.55:1	1.08	1.60:1	1.22
minibend VG-3.5	32081E-2-29890CR-3.5	3.50 (88.9)	1.20:1	0.22	1.45:1	0.74	1.55:1	1.16	1.60:1	1.32
minibend VG-4	32081E-2-29890CR-4	4.00 (101.6)	1.20:1	0.23	1.45:1	0.80	1.55:1	1.25	1.60:1	1.42
minibend VG-4.5	32081E-2-29890CR-4.5	4.50 (114.3)	1.20:1	0.25	1.45:1	0.86	1.55:1	1.34	1.60:1	1.53
minibend VG-5	32081E-2-29890CR-5	5.00 (127.0)	1.20:1	0.26	1.45:1	0.92	1.55:1	1.43	1.60:1	1.63
minibend VG-5.5	32081E-2-29890CR-5.5	5.50 (139.7)	1.20:1	0.28	1.45:1	0.98	1.55:1	1.51	1.60:1	1.73
minibend VG-6	32081E-2-29890CR-6	6.00 (152.4)	1.20:1	0.30	1.45:1	1.05	1.55:1	1.60	1.60:1	1.83
minibend VG-6.5	32081E-2-29890CR-6.5	6.50 (165.1)	1.20:1	0.31	1.45:1	1.11	1.55:1	1.69	1.60:1	1.93
minibend VG-7	32081E-2-29890CR-7	7.00 (177.8)	1.20:1	0.33	1.45:1	1.17	1.55:1	1.78	1.60:1	2.03
minibend VG-7.5	32081E-2-29890CR-7.5	7.50 (190.5)	1.20:1	0.34	1.45:1	1.23	1.55:1	1.86	1.60:1	2.14
minibend VG-8	32081E-2-29890CR-8	8.00 (203.2)	1.20:1	0.36	1.45:1	1.29	1.55:1	1.95	1.60:1	2.24
minibend VG-9	32081E-2-29890CR-9	9.00 (228.6)	1.20:1	0.39	1.45:1	1.41	1.55:1	2.13	1.60:1	2.44
minibend VG-10	32081E-2-29890CR-10	10.00 (254.0)	1.20:1	0.42	1.45:1	1.54	1.55:1	2.30	1.60:1	2.64
minibend VG-11	32081E-2-29890CR-11	11.00 (279.4)	1.20:1	0.45	1.45:1	1.66	1.55:1	2.48	1.60:1	2.85
minibend VG-12	32081E-2-29890CR-12	12.00 (304.8)	1.20:1	0.48	1.45:1	1.78	1.55:1	2.65	1.60:1	3.05
minibend VG-	32081E-2-29890CR-									

minibend VG-XX

CONTROL DRAWING G

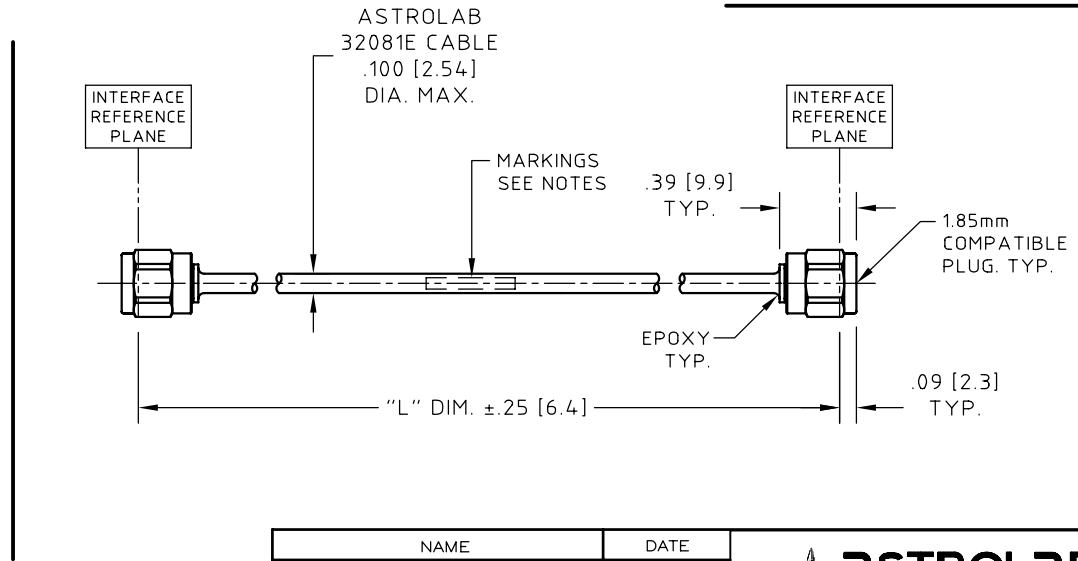
ALL minibend CABLE ASSEMBLIES ARE 99.9% LEAD FREE BY WEIGHT



SHOWN ABOVE IS TYPICAL INSTALLATION

NOTES:

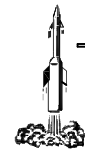
- CABLE EXCEEDS MIL-DTL-17.
 INNER CONDUCTOR... SILVER PLATED OFHC SOLID COPPER WIRE.
 DIELECTRIC... TFE FLUOROCARBON.
 INNER BRAID... SILVER PLATED OFHC FLAT COPPER WIRE BRAID.
 BARRIER LAYER... POLYIMIDE/ALUMINUM TAPE.
 OUTER LAYER... 304 STAINLESS STEEL WIRE BRAID.
 OUTER JACKET... EXTRUDED FEP.
- CONNECTORS MEET MIL-PRF-39012.
 BODY, NUT AND BACK NUT,
 STEEL, CORROSION RESISTANT PER ASTM A-582,
 UNS No. S30300, COND. A, NON MAGNETIC.
 PASSIVATED PER SAE-AMS-2700 OR ASTM A-967.
 NO DICHROMATE SOLUTIONS USED.
 BACK NUT IS NICKEL ALLOY PLATED.
 CENTER CONDUCTOR,
 BERYLLIUM COPPER ALLOY PER ASTM B-196,
 UNS No. C17300, TEMPER TD04(H).
 GOLD PLATED .000050 IN MIN. THK. (1.27 MICRO METERS)
 PER ASTM B-488, CODE C, TYPE II
 OVER
 NICKEL PLATE, .000050 IN MIN. THK. PER SAE-AMS-QQ-N-290,
 OR ASTM B-689 TYPE 1.
 DIELECTRIC,
 POLYTETRAFLUOROETHYLENE (PTFE) PER ASTM D-1710
 OR ASTM D-4894, TYPE I, GRADE 1.
 EPOXY,
 TWO-COMPONENT HIGH TEMPERATURE EPOXY SYSTEM.
- ELECTRICAL CHARACTERISTICS: (SEE MAXIMUM VALUES IN CHART).
- TECHNICAL DATA:
 OPERATING TEMPERATURE RANGE:
 -55°C TO +125°C.
 PULL STRENGTH TO 25 LBS.
- MARKING APPROXIMATELY CENTERED DIRECTLY ON CABLE AS FOLLOWS:
 "minibend VG-XX YYWW"
 WHERE "XX" DENOTES THE LENGTH OF THE CABLE ASSEMBLY, AND "YYWW"
 THE DATE CODE, YEAR AND WEEK DETERMINED BY PRODUCTION DATE.
 NO MARKING ON CABLE ASSEMBLIES "minibend VG-2.0" OR SHORTER.
 MARKING ON PACKING ONLY.



UNLESS OTHERWISE SPECIFIED
 CONCENTRICITY .004 T.I.R.
 CORNERS AND FILLETS .005
 MAX. RADIUS OR CHAMFER.
 SURFACE FINISH 63 RMS
 MICROINCHES OR BETTER.

FRACTIONS	± 1/16
X	± .030
XX	± .015
XXX	± .005
ANGLES	± 1°
DO NOT SCALE DRAWING	

NAME	DATE
PREP. AP	09/16/03
ELEC. RF	11/11/03
MECH. GSG	11/11/03
Q.C. AG	11/11/03



ASTROLAB® INC.
 WARREN, NJ
 THIS DRAWING CONTAINS PATENTABLE AND
 PROPRIETARY INFORMATION. THE DESIGN
 CANNOT BE USED WITHOUT WRITTEN
 PERMISSION OF ASTROLAB

TITLE		CABLE ASSEMBLY, 1.85mm COMPATIBLE PLUG		SCALE	1:1	CODE IDENT.	16301	DWG NO.	minibend VG-XX	REV	G
THDS. TO BE IN ACCORD WITH U.S. DEPT. OF COMM. SCREW THD. STDS. FOR FEDERAL SERVICES 1950 SUPL. TO HANDBOOK H 28.											

G	ECN No. 114-99	10/23/07	EB	
REV.	DESCRIPTION	DATE	BY	APPROVED